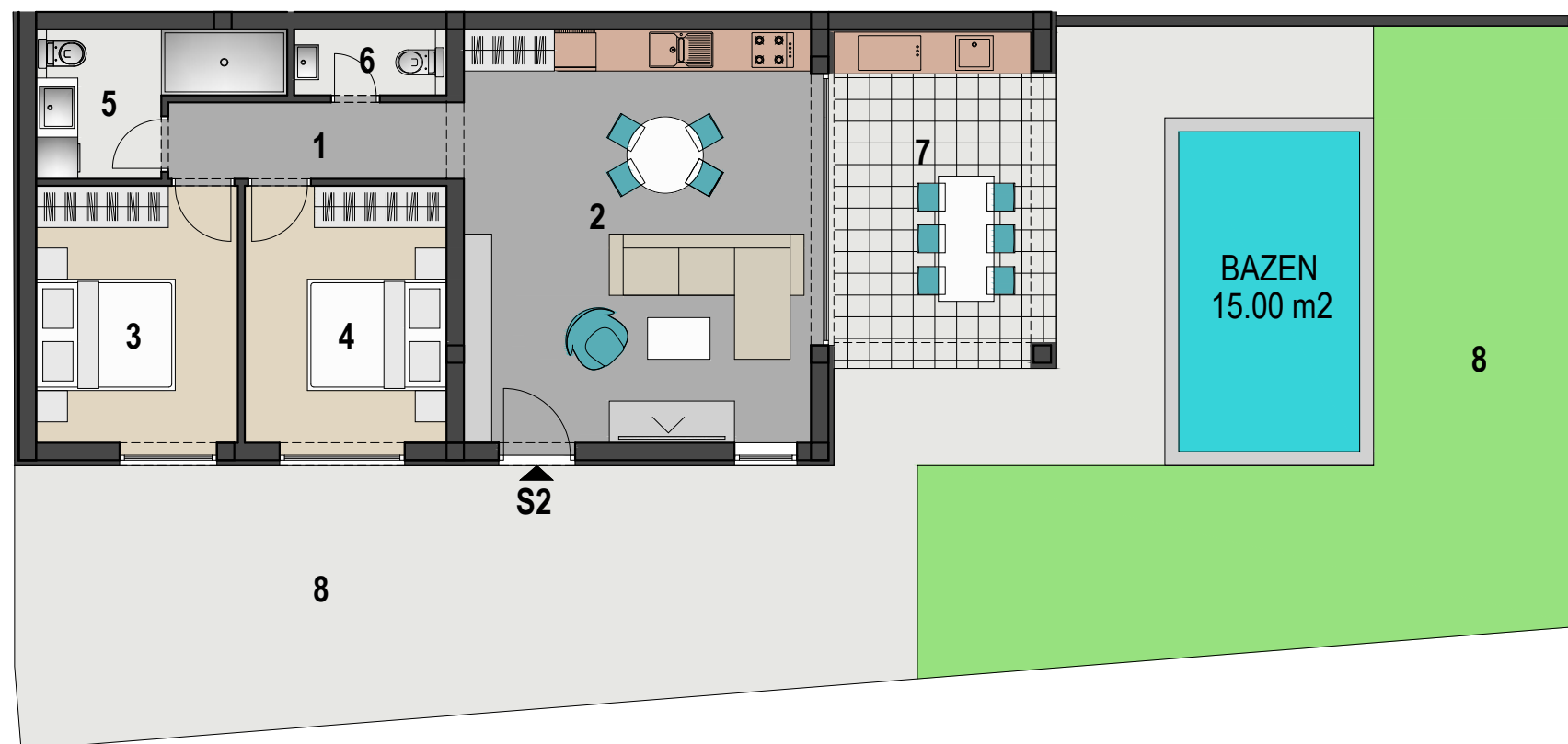
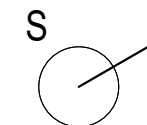


# VIŠESTAMBENA ZGRADA, TKON



STAN S2		
1	HODNIK	4.70 m2
2	KUHINJA+BORAVAK	29.60 m2
3	SOBA 1	10.70 m2
4	SOBA 2	10.70 m2
5	KUPAONICA	5.50 m2
6	WC	1.90 m2
7	TERASA	15.00x0.50 = 7.50 m2
8	VRT	109.00x0.10 = 10.90 m2
		<b>81.50 m2</b>

TLOCRT SUTERENA M 1:100