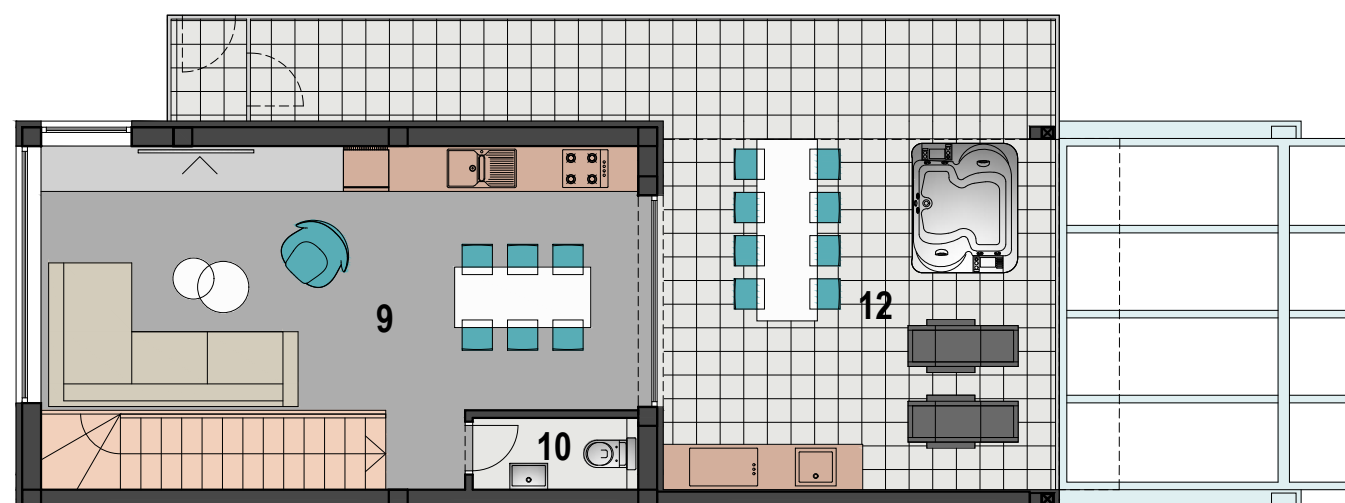
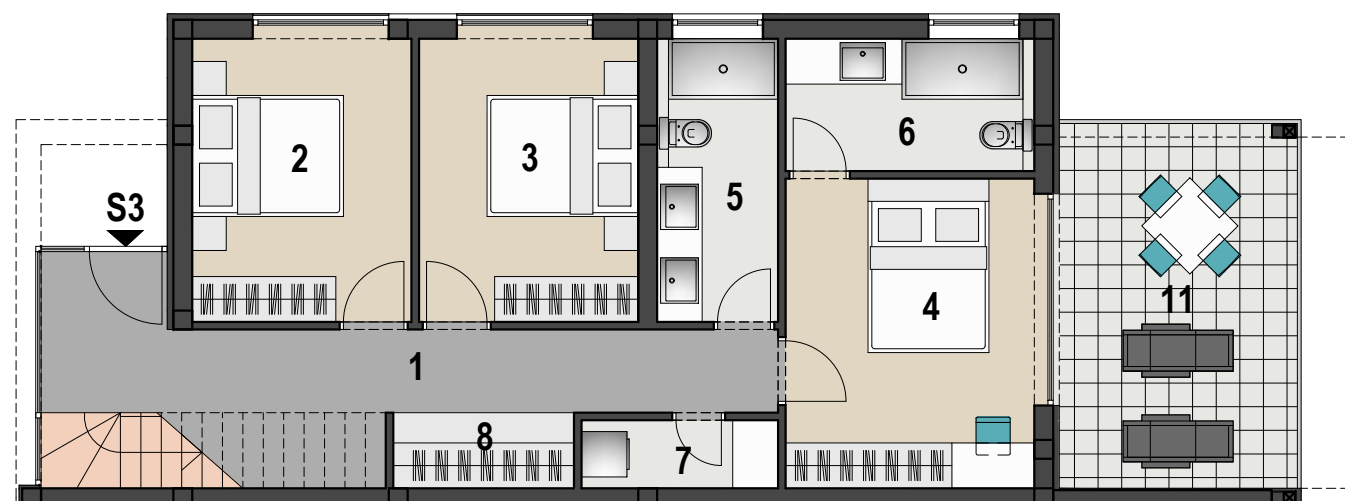
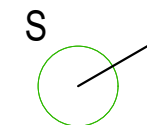


# VIŠESTAMBENA ZGRADA, TKON



| STAN S3 |                 |                                      |
|---------|-----------------|--------------------------------------|
| 1       | HODNIK+STUBIŠTE | 17.10 m <sup>2</sup>                 |
| 2       | SOBA 1          | 10.90 m <sup>2</sup>                 |
| 3       | SOBA 2          | 10.90 m <sup>2</sup>                 |
| 4       | SOBA 3          | 13.50 m <sup>2</sup>                 |
| 5       | KUPAONICA 1     | 5.70 m <sup>2</sup>                  |
| 6       | KUPAONICA 2     | 5.50 m <sup>2</sup>                  |
| 7       | VEŠ             | 2.20 m <sup>2</sup>                  |
| 8       | ORMAR           | 2.40 m <sup>2</sup>                  |
| 9       | KUHINJA+BORAVAK | 33.50 m <sup>2</sup>                 |
| 10      | WC              | 1.90 m <sup>2</sup>                  |
| 11      | TERASA 1        | 15.60x0.25 =<br>3.90 m <sup>2</sup>  |
| 12      | TERASA 2        | 40.60x0.25 =<br>10.10 m <sup>2</sup> |
|         |                 | <b>117.60 m<sup>2</sup></b>          |

TLOCRT 1. i 2. KATA M 1:100